



The entire world of high pressure cleaning

COMPETENCE IN CLEANING



HIGH PRESSURE CLEANING

The big WEIDNER-programme for cleaning & cleanliness

Introducing the big WEIDNER catalogue with the complete product range for both cleaning and cleanliness. There are many elements which speak for the increasing success of our products.



Quality to the last detail!

Since 1918 the trademark WEIDNER is well known for high quality and solid reliability. »Satisfied customers ensure tomorrow's success!« Constant checking of materials and strict production controls ensure the high quality standard.

Specialist advice!

The innovation of WEIDNER's products suits our customers requirements and necessity. Our customers receive a quality product that is tailored for their individual demands. Many factors must be considered during a good consultation; will the product be used in the private or in the trade area? Which accessories are suitable for the purpose? Is the appliance subjected to extensive use, i.e. professional cleaning companies? The professional advice from our specialists protects against wrong decisions and therefore prevents difficulty.

Safety!

WEIDNER products comply, of course, with international safety regulations. The safety tests in the electrical and mechanical areas are confirm the measurement undertaken by us for the safety of our products during daily use.

The most up-to-date technology!

Our customers expect products which are distinguished by exceptional application features, which confirm our endeavours for technical advance. Comfortable handling, safety features and the economical running costs are the clear-cut features of the WEIDNER technology.

Ergonomics!

The human being is at the centre when it comes to the development and construction of modern machines and tools. In the interests of health and for the prevention of unnecessary burdens, the discoveries of modern work medicine are considered in the product design.

Environmental awareness!

With WEIDNER not only the effective economy of our products counts, we also endeavour to reduce the burden to a minimum. Measurement of noise are reduced, usage of recyclable raw materials where possible, effective lowest energy consumption at a high degree, the use of bio-degradable cleaning agents and water and energy methods etc., are put in to practice.

Service!

A fast and reliable service is obligatory for us. The most important serviceable parts are stocked and are usually available to you on site within 24 to 48 hours. The WEIDNER service technicians are carefully trained. This way repairs are carried out with the utmost efficiency and cost effectiveness. The catalogue shows the diversity of our range. The most important information and capacity data is clearly allocated to the individual product groups. The extensive range of accessories shows clearly the flexibility of our products.

If you have further questions do not hesitate to avail of the advisory service of our distribution partner or the advisory service of our factory. We will demonstrate our products on request.

WEIDNER has the complete programme for high pressure cleaning and cleanliness. The individual product families are illustrated and described in the following pages.



HIGH-PERFORMANCE:

Powerful and long-lasting traction drive unit and powerful drive units warrant enough power and strength for all cleaning tasks.



MAINTENANCE FRIENDLY:

Good accessibility at all prefabricated parts make the replacement children's game.



ROBUST:

Our equipments are robust and solid by means of qualitative high value and by use of best materials.



EFFICIENT:

The compact construction and the optimum drive- or suction unit make Weidner equipments efficient, powerful and variable applicable.



USER FRIENDLY:

Well thought-out ergonomology warrants user comfort by all machines.

CONTENT

Dry Steam Cleaners	Page	04 – 06
High Pressure Cleaners – unheated	Page	07 – 10
High Pressure Cleaners – unheated with petrol drive	Page	11 – 12
Hot Water Module	Page	13
High Pressure Cleaners – unheated with 320-400 bar	Page	14 – 15
High Pressure Cleaners – electrically heated	Page	16
High Pressure Cleaners – oil heater	Page	17 – 19
High Pressure Cleaners – stationary unheated	Page	20 – 24
Heating Unit, Boiler	Page	25
High Pressure Cleaners – stationary heated	Page	26 – 27
Special Cleaning Equipments	Page	28 – 33
Accessories	Page	34 – 35

To give a better overview, the product ranges have been divided in 3 groups:

- Recommended for semi professional use
- Products for business and industrial applications
- Products for daily, industrial cleaning applications



Anti-Twist-System – swivel to prevent hose twisting



Time-Delayed-Stop – time delayed, pressure free stop



Stepless pressure adjustment at the high pressure pistol

Dry Steam Cleaner, oil heated

DAS300 LXTS/KXTS

For large applications – industrial, environmentally friendly and powerful



USER FRIENDLY

- Clear and easy
- Easy transport through tandem axle
- Air inflated tyres
- LED-system control with light diodes



MAINTENANCE FRIENDLY

- Easy access to all components



ROBUST

- Frame out of metal
- Cover out of stainless steel



HIGH-PERFORMANCE

- Slow running 3 ceramic plunger pump
- Industrial motor 100% S1



EFFICIENT

- Compact construction
- Industrial accessories
- Low water consumption
- System temperature up to 185°C
- Addition of compressed air

Application areas:

- Paper industry
- Food industry
- Miscellaneous industrial cleaning (print-, stamp-, milling-CNC machines)
- Cleaning of historical buildings and monuments



Model	DAS300 LXTS	DAS300 KXTS
Order-No.	DAS300 LXTS - 013	DAS300 KXTS - 013
Max. operating pressure [bar]	16	16
Max. flow rate by dry steam [l/min]	0,9	0,9
Max. flow rate by moisture steam [l/min]	2,0	2,0
Max. flow rate by wet steam [l/min]	2,7	2,7
Power [kW]	3,0 S1 Industrial motor	3,0 S1 Industrial motor
Heating power [kW]	63 oil heatet	63 oil heatet
Voltage [V/Hz]	1-230 V/50 Hz	3-400 V/50 Hz
Max. water supply temperature [°C]	30	30
High pressure pump	ceramic plunger pump	ceramic plunger pump
Rotation [r/min]	1420	1420
Compressed air requirement [l/min]	500	500
Measurement (lxwxh) [mm]	1080x740x830	1080x740x830
Weight [kg]	145	145
Apply recommendation		

Dry Steam Cleaner, oil heated

DAS300 ECPS

For large applications – industrial, environmentally friendly and powerful



USER FRIENDLY

- Clear and easy
- Easy transport through tandem axle
- Air inflated tyres
- LED-system control with light diodes



MAINTENANCE FRIENDLY

- Easy access to all components



ROBUST

- Frame out of metal
- Cover out of stainless steel



HIGH-PERFORMANCE

- Diaphragm pump



EFFICIENT

- Compact construction
- Industrial accessories
- Low water consumption
- System temperature up to 185°C
- Addition of compressed air

Application areas:

- Paper industry
- Food industry
- Miscellaneous industrial cleaning (print-, stamp-, milling-CNC machines)
- Cleaning of historical buildings and monuments



Model	DAS300 ECPS
Order-No.	DAS300 ECPS - 013
Max. operating pressure [bar]	10
Max. flow rate by dry steam [l/min]	0,23
Max. flow rate by wet steam [l/min]	0,23
Heating power [kW]	18 electric heated
Voltage [V/Hz]	3-400 V/ 50 Hz
Max. water supply temperature [°C]	30
High pressure pump	diaphragm pump
Compressed air demand [l/min]	500
Measurement (lxwxh) [mm]	1080x740x830
Weight [kg]	145
Apply recommendation	

DAS Applications



Monument cleaning.



BEFORE

Cleaning hydraulic device.



AFTER



BEFORE

Cleaning glamping device.



AFTER



Cleaning heat exchanger.



BEFORE

Cleaning electric motor.



AFTER

Waschboy 132/162 LXTR

For medium size jobs – robust and powerful in a tubular frame



USER FRIENDLY

- Clear and easy
- Chassis to hang up is optional available



MAINTENANCE FRIENDLY

- Easy access to all components



ROBUST

- Steel frame out of robust metal, plastic coated



HIGH- PERFORMANCE

- Slow running plunger pump with 3 ceramic plungers
- Industrial motor S1 class



EFFICIENT

- Compact construction
- Miscellaneous industrial accessories
- Thermostat protects the pump from overheating



Model	Waschboy 132 LXTR	Waschboy 162 LXTR
Order - No.	HKY 132 LXTR - 000	HKY 162 LXTR - 000
Max. operating pressure [bar]	130	160
Max. flow rate [l/h]	660	540
Absorbed energy [kW]	3,6 S1 Industrial motor	3,6 S1 Industrial motor
Voltage [V/Hz]	1 ~ 230 V/50 Hz	1 ~ 230 V/50 Hz
Max. water temperature [°C]	60	60
High pressure pump	plunger pump with 3 ceramic plungers	plunger pump with 3 ceramic plungers
Rotation [r/min]	1420	1420
Detergent supply dosing	injector pressure side, infinitely adjustable	injector pressure side, infinitely adjustable
Measurement (lxwxh) [mm]	520 x 330 x 330	520 x 330 x 330
Weight [kg]	43	43
Apply recommendation		

High Pressure Cleaner unheated

Waschboy 132/162 LXTF

For medium size jobs – robust and powerful



USER FRIENDLY

- Clear and easy
- Superelastic tyres
- Jockey wheel with brake



MAINTENANCE FRIENDLY

- Easy access to all components



ROBUST

- Chassis out of robust metal, plastic coated
- Stainless steel cover



HIGH-PERFORMANCE

- Slow running plunger pump with 3 ceramic plungers
- Industrial motor S1 class



EFFICIENT

- Compact construction
- Miscellaneous industrial accessories
- Thermovalve protects the pump from overheating



Model	Waschboy 132 LXTF	Waschboy 162 LXTF
Order - No.	HKY 132 LXTF - 000	HKY 162 LXTF - 000
Max. operating pressure [bar]	130	160
Max. flow rate [l/h]	660	540
Absorbed energy [kW]	3,6 S1 Industrial motor	3,6 S1 Industrial motor
Voltage [V/Hz]	1 ~ 230 V/50 Hz	1 ~ 230 V/50 Hz
Max. water temperature [°C]	60	60
High pressure pump	plunger pump with 3 ceramic plungers	plunger pump with 3 ceramic plungers
Rotation [r/min]	1420	1420
Detergent supply	injector pressure side, infinitely adjustable	injector pressure side, infinitely adjustable
Measurement (lxwxh) [mm]	520x330x330	520x330x330
Weight [kg]	45	45
Apply recommendation		

High Pressure Cleaner unheated

Waschboy 212 KRA(A)/213 KWP(A)

For big applications – industrial, robust and powerful



USER FRIENDLY

- Clear and easy
- Superelastic tyres
- Jockey wheel with brake



MAINTENANCE FRIENDLY

- Easy access to all components



ROBUST

- Chassis out of robust metal, plastic coated
- Stainless steel cover



HIGH-PERFORMANCE

- Slow running plunger pump with 3 ceramic plungers
- Industrial motor S1 class



EFFICIENT

- Compact construction
- Miscellaneous industrial accessories
- Thermovalve protects the pump from overheating



Model	Waschboy 212 KRK	Waschboy 212 KRKA	Waschboy 213 KWP	Waschboy 213 KWPA
Order - No.	HKY 212 KRK - 014	HKY 212 KRKA - 014	HKY 213 KWP - 014	HKY 213 KWPA - 014
Max. operating pressure [bar]	210	210	210	210
Max. flow rate [l/h]	1000	1000	1000	1000
Absorbed energy [kW]	6,6 S1 Industrial motor	6,6 S1 Industrial motor	6,6 S1 Industrial motor	6,6 S1 Industrial motor
Voltage [V/Hz]	3 ~ 400 V / 50 Hz	3 ~ 400 V / 50 Hz	3 ~ 400 V / 50 Hz	3 ~ 400 V / 50 Hz
Max. water temperature [°C]	60	60	60	60
High pressure pump	plunger pump with 3 ceramic plungers	plunger pump with 3 ceramic plungers	plunger pump with 3 ceramic plungers	plunger pump with 3 ceramic plungers
Rotation [r/min]	1420	1420	1420	1420
Detergent supply (optional)	injector pressure side, infinitely adjustable	injector pressure side, infinitely adjustable	injector pressure side, infinitely adjustable	injector pressure side, infinitely adjustable
Measurement (lxwxh) [mm]	580x580x910	580x580x910 mm	580x580x910	580x580x910
Weight [kg]	61	61	61	61
Apply recommendation				

High Pressure Cleaner unheated

Waschboy 132 CA/ 182 CA

XCLASS

For big applications in hygienic areas –
Industrial, robust and powerful



USER FRIENDLY

- Clear and easy
- Non marking, air inflated tyres
- Non marking jockey wheel with parking brake



MAINTENANCE FRIENDLY

- Easy access to all components



ROBUST

- Frame and chassis out of stainless steel
- Stainless steel cover



HIGH-PERFORMANCE

- Slow running CAT-3 ceramic plungers pump
- Industrial motor 100% S1



EFFICIENT

- Compact construction
- Food safe industrial accessories
- Time delayed pressureless stop
- Pump and power separated through coupling housing



Model	Waschboy 132 CA	Waschboy 182 CA
Order - No.	HKY 132 C 23 A - 000	HKY 182 C 15 A - 000
Max. operating pressure [bar]	120	180
Max. flow rate [l/h]	1380	1000
Absorbed energy [kW]	6,6 S1 Industrial motor	6,6 S1 Industrial motor
Voltage [V/Hz]	3 ~ 400 V/50 Hz	3 ~ 400 V/50 Hz
Max. water temperature [°C]	72	72
High pressure pump	plunger pump with 3 ceramic plungers	plunger pump with 3 ceramic plungers
Rotation [r/min]	1420	1420
Detergent supply (optional)	injector pressure side, infinitely adjustable	injector pressure side, infinitely adjustable
Measurement (lxwxh) [mm]	780x680x890	780x680x890
Weight [kg]	70	70
Apply recommendation		

High Pressure Cleaner unheated with petrol engine

Waschboy 152 B

For medium sized applications – robust and
powerful in tubular steel frame



USER FRIENDLY

- Clear and easy
- Chassis to hang up is optional available



MAINTENANCE FRIENDLY

- Easy access to all components



ROBUST

- Frame out of metal



HIGH-PERFORMANCE

- Slow running plunger pump with 3 ceramic plungers
- HONDA 4 stroke engine with low oil cut out



EFFICIENT

- Compact construction
- Reduction gear box 2:1
- Miscellaneous industrial accessories
- Automatic rotation reduction if gun is closed
- Suction through slow running pump is possible



Model	Waschboy 152 B
Order-No.	HKY 152 BXT
Max. pressure [bar]	150
Max. flow rate [l/h]	660
Power [kW]	5,5 PS 4 - stroke HONDA GX 160
Max. water temperatur [°C]	50
High pressure pump	plunger pump with 3 ceramic plungers
Rotation [r/min]	1750
Detergent supply	Injektor pressure side, infinitely adjustable
Measurement (lxwxh) [mm]	300x430x430
Weight [kg]	40
Apply recommendation	

High Pressure Cleaner unheated with petrol engine

Waschboy 202 / 242 B

For big applications – robust and powerful inside tubular frame with wheels



USER FRIENDLY

- Clear and easy
- Chassis with air-inflated wheels.



MAINTENANCE-FRIENDLY

- Easy access to all components



ROBUST

- Frame out of tubular metal



HIGH-PERFORMANCE

- Slow running plunger pump with 3 ceramic plungers
- HONDA 4 stroke engine with oil deficiency protection



EFFICIENT

- Compact construction
- Miscellaneous industrial accessories
- Automatic rotation reduction if gun is closed
- Reduction gear box 2:1
- Suction through slow running pump is possible



Model	Waschboy 202 B	Waschboy 242 B
Order-No.	HKY 202 BXRA	HKY 242 BXRA
Max. pressure [bar]	200 bar	240
Max. flow rate [l/h]	1080	1000
Power [kW]	11 PS 4 - stroke HONDA GX 340	11 PS 4 - stroke HONDA GX 340
Max. water temperatur [°C]	50	50
High pressure pump	plunger pump with 3 ceramic plungers	plunger pump with 3 ceramic plungers
Rotation [r/min]	1750	1750
Detergent supply (optional)	Injektor pressure side, infinitely adjustable	Injektor pressure side, infinitely adjustable
Measurement (bwxh) [mm]	1150x720x880	1150x720x880
Weight [kg]	100 kg	100 kg
Apply recommendation		

Hot water module

Waschbär 2020 Aquatherm

For special application – industrial, robust and powerful



USER FRIENDLY

- Clear and easy
- Air inflated tyres



MAINTENANCE-FRIENDLY

- Easy access to all components



ROBUST

- Chassis made of tubular frame
- Stainless steel cover



HIGH-PERFORMANCE

- Slow running plungerpump with 3 ceramic plungers
- Industrial motor 100% S1



EFFICIENT

- Compact construction
- Miscellaneous industrial accessories
- Separate ventilation power
- Fuel oil cut out switch
- Vertical heating coil with high degree of efficiency



Modell	Waschbär Aquatherm 2020
Order-No.	HKW AT 2020
Max. operating pressure [bar]	240
Max. flow rate [l/h]	1260
Power [V/Hz]	1 - 230 V / 50 Hz
Max. water temperatur ** [°C]	95
Measurement (bwxh) [mm]	590x850x680 mm
Weight [kg]	85
Apply recommendation	

** by flow rate reduction

High Pressure Cleaner unheated

Waschboy 320 E

For big applications – industrial, robust and powerful



USER FRIENDLY

- Clear and easy
- Super elastic tyres



MAINTENANCE FRIENDLY

- Easy access to all components
- Large dimensioned water filter



ROBUST

- Frame out of tubular metal



HIGH-PERFORMANCE

- Slow running plunger pump with 3 ceramic plungers
- Industrial motor 100 % S1 class



EFFICIENT

- Compact construction
- Miscellaneous industrial accessories
- Thermovalve protects the pump from overheating
- Star delta switch with power protection

Application areas:

- Barking of the tree trunk
- Vessel's cleaning
- Cleaning of monuments and building stones
- Reconstruction of buildings and concrete
- Cleaning of construction vehicles



Model	Waschboy 320 E
Order-No.	HKY 320 ENP
Max. pressure [bar]	320
Max. flow rate [l/h]	1260
Power [kW]	15,0 kW S1 Industrial motor
Voltage [V/Hz]	3 ~ 400 V / 50 Hz
Max. water temperatur [°C]	50
High pressure pump	plunger pump with 3 ceramic plungers
Rotation [r/min]	1420
Measurement (lxwxh) [mm]	910x680x680
Weight [kg]	190
Apply recommendation	

High Pressure Cleaner unheated

Waschboy 400 E

For big applications – industrial, robust and powerful



USER FRIENDLY

- Clear and easy
- Superelastic tyres



MAINTENANCE FRIENDLY

- Easy access to all components
- Large dimensioned water filter



ROBUST

- Frame out of robust tubular metal



HIGH-PERFORMANCE

- Slow running plunger pump with 3 ceramic plungers
- Industrial motor 100 % S1 class



EFFICIENT

- Compact construction
- Miscellaneous industrial accessories
- Thermovalve protects the pump from overheating
- Star delta switch with power protection

Application areas:

- Barking of the tree trunk
- Vessel's cleaning
- Cleaning of monuments and building stones
- Reconstruction of buildings and concrete
- Cleaning of construction vehicles



Model	Waschboy 400 E
Order-No.	HKY 400 EIP
Max. pressure [bar]	400
Max. flow rate [l/h]	1500
Power [kW]	22,0 kW S1 Industrial motor
Voltage [V/Hz]	3 ~ 400 V / 50 Hz
Max. water temperatur [°C]	50
High pressure pump	plunger pump with 3 ceramic plungers
Rotation [r/min]	1000
Measurement (lxwxh) [mm]	1030x1020x740
Weight [kg]	340
Apply recommendation	

High Pressure Cleaner electric heated

Waschbär S 2000 E

For large applications – industrial, robust and powerful



- USER FRIENDLY**
- Clear and easy
 - Air inflated tyres
 - Jockey wheel with parking brake



- MAINTENANCE FRIENDLY**
- Easy access to all components



- ROBUST**
- Robust metal chassis plastic coated
 - Cover out of stainless steel
 - Heater out of stainless steel



- HIGH-PERFORMANCE**
- Slow running CAT plunger pump with 3 ceramic plungers
 - Industrial motor 100% S1



- EFFICIENT**
- Compact construction
 - Miscellaneous industrial accessories
 - Time delayed automatic stop
 - Separated heating elements



Model	Waschbär S 2000 E	Waschbär S 2000 E	Waschbär S 2000 E
Order-No.	HWY 112 ECA - 013	HWY 118 ECA - 013	HWY 127 ECA - 013
Max. pressure	[bar] 150	150	150
Max. flow rate	[l/h] 660	660	660
Power	[kW] 3,6 kW S1 Industrial motor	3,6 kW S1 Industrial motor	3,6 kW S1 Industrial motor
Heating capacity	[kW] 12 kW electric heated	18 kW electric heated	27 kW electric heated
Voltage	[V/Hz] 3 ~ 400 V/50 Hz/32 Amp.	3 ~ 400 V/50 Hz/63 Amp.	3 ~ 400 V/50 Hz/63 Amp.
Max. water temperatur	[°C] 72	72	72
High pressure pump	plunger pump with 3 ceramic plungers	plunger pump with 3 ceramic plungers	plunger pump with 3 ceramic plungers
Rotation	[r/min] 1420	1420	1420
Detergent supply	exact dosing of 2 different chemicals	exact dosing of 2 different chemicals	exact dosing of 2 different chemicals
Measurement (lwxhx)	[mm] 1080x740x830	1080x740x830	1080x740x830
Weight	[kg] 95	100	105
Apply recommendation			

High Pressure Cleaner diesel oil heated

Waschbär S 550

For medium applications – industrial, robust and powerful



- USER FRIENDLY**
- Clear and easy
 - Easy transportation through tandem axle
 - Superelastic tyres



- MAINTENANCE FRIENDLY**
- Easy access to all components



- ROBUST**
- Chassis out of robust metal, plastic coated
 - Stainless steel cover



- HIGH-PERFORMANCE**
- Slow running plunger pump with 3 ceramic plungers.
 - Industrial motor S1 class



- EFFICIENT**
- Compact construction
 - Miscellaneous industrial accessories
 - Time delayed stop
 - Standing heating coil with high efficiency



Model	Waschbär S 550	Waschbär S 550	Waschbär S 550
Order-No.	HWY 1132 LXT - 000	HWY 1152 KXT - 000	HWY 1162 KXT - 000
Max. pressure	[bar] 130	150	160
Max. flow rate	[l/h] 660	660	540
Power	[kW] 3,0 kW S1 Industrial motor	3,6 kW S1 Industrial motor	3,0 kW S1 Industrial motor
Voltage	[V/Hz] 1 ~ 230 V/50 Hz	3 ~ 400 V/50 Hz	1 ~ 230 V/50 Hz
Max. water temperatur **	[°C] 40-140	40-140	40-140
High pressure pump	plunger pump with 3 ceramic plungers	plunger pump with 3 ceramic plungers	plunger pump with 3 ceramic plungers
Rotation	[r/min] 1420	1420	1420
Detergent supply	injector pressure side, infinitely adjustable	injector pressure side, infinitely adjustable	injector pressure side, infinitely adjustable
Measurement (lwxhx)	[mm] 750x700x700	750x700x700	750x700x700
Weight	[kg] 100	105	100
Apply recommendation			

** by flow rate reduction



High Pressure Cleaner diesel heated

Waschbär S 2000

For large applications –
industrial, robust and powerful



USER FRIENDLY

- Clear and easy
- Easy transportation through tandem axle
- Air inflated tyres
- LED system control device with luminous diode



MAINTENANCE FRIENDLY

- Easy access to all components



ROBUST

- Chassis out of robust metal, plastic coated
- Stainless steel cover



HIGH-PERFORMANCE

- Slow running plunger pump with 3 ceramic plungers.
- Industrial motor S1 class



EFFICIENT

- Compact construction
- Miscellaneous industrial accessories
- Time delayed stop pressure free automatic switch-off
- Standing heating coil with high efficiency

XCLASS



Model	Waschbär S 2000	Waschbär S 2000	Waschbär S 2000	Waschbär S 2000
Order-No.	HWY 122 LXTT - 013	HWY 200 KXRT - 013	HWY 202 KIPXT - 013	HWY 203 KWPXT - 013
Max. pressure [bar]	120	200	200 bar	200
Max. flow rate [l/h]	660	1000	1000	1000
Power [kW]	3,6 kW S1 Industrial motor	6,6 kW S1 Industrial motor	6,6 kW S1 Industrial motor	6,6 kW S1 Industrial motor
Voltage [V/Hz]	1 - 230 V/50 Hz	3 ~ 400 V/50 Hz	3 ~ 400 V/50 Hz	3 ~ 400 V/50 Hz
Max. water temperatur ** [°C]	40-140	40-140	40-140	40-140
High pressure pump	plunger pump with 3 ceramic plungers	plunger pump with 3 ceramic plungers	plunger pump with 3 ceramic plungers	plunger pump with 3 ceramic plungers
Rotation [r/min]	1420	1420	1420	1420
Detergent supply	exact dosing of 2 different chemicals	exact dosing of 2 different chemicals	exact dosing of 2 different chemicals	exact dosing of 2 different chemicals
Measurement (lwxhxh) [mm]	1080x740x830	1080x740x830	1080x740x830	1080x740x830
Weight [kg]	140	150	150	150
Apply recommendation				

High Pressure Cleaner diesel heated

High Pressure Cleaner stationary unheated

MS 111/113

For medium applications – industrial, robust and powerful



USER FRIENDLY

- Clear and easy
- Stationary high pressure cleaner for wall mounting



MAINTENANCE FRIENDLY

- Easy access to all components



ROBUST

- Frame out of stainless steel



HIGH PERFORMANCE

- Slow running 3 ceramic plungers pump
- Industrial motor 100% S1



EFFICIENT

- Compact construction
- Miscellaneous industrial accessories
- Time delayed pressure free total stop
- Possible to connect several drop points



Model	MS 111	MS 113
Order-No.	SOY MS 111 - 000	SOY MS 113 - 000
Max. pressure [bar]	130	150
Max. flow rate [l/h]	660	780
Power [kW]	3,0 kW S1 Industrial motor	3,6 kW S1 Industrial motor
Voltage [V/Hz]	1 ~ 230 V/50 Hz	3 ~ 400 V/50 Hz
Max. supplied water temperature [°C]	60	60
High pressure pump	plunger pump with 3 ceramic plungers	plunger pump with 3 ceramic plungers
Rotation [r/min]	1420	1420
Measurement (lxwxh) [mm]	520x400x600	520x400x600
Weight [kg]	41	43
Apply recommendation		

High Pressure Cleaner stationary unheated

Combi 150/200

For medium applications – industrial, robust and powerful



USER FRIENDLY

- Clear and easy
- Stationary high pressure cleaning device for floor or wall mounting optional available



MAINTENANCE FRIENDLY

- Easy access to all components



ROBUST

- Frame out of metal
- Cover out of stainless steel



HIGH-PERFORMANCE

- Slow running 3 ceramic plungers pump
- Industrial motor 10% S1



EFFICIENT

- Compact construction
- Miscellaneous industrial accessories
- Big dimensioned water feed line container
- Time delayed pressure free total stop
- Possible to connect several drop stations
- Pump and motor separated through coupling device



Model	Combi 150	Combi 200
Order-No.	SOY 1150 KSA	SOY 1200 KSA
Max. pressure [bar]	150	200
Max. flow rate [l/h]	1260	1000
Power [kW]	6,6 kW S1 Industrial motor	6,6 kW S1 Industrial motor
Voltage [V/Hz]	3 ~ 400 V/50 Hz	3 ~ 400 V/50 Hz
Max. supplied water temperature [°C]	60	60
High pressure pump	plunger pump with 3 ceramic plungers	plunger pump with 3 ceramic plungers
Rotation [r/min]	1420	1420
Measurement (lxwxh) [mm]	770x410x440	770x410x440
Weight [kg]	70	70
Apply recommendation		

High pressure cleaner stationary unheated

WR 115 / 123 / 215 / 223

For medium and big applications
– industrial, robust and powerful



USER FRIENDLY

- Clear and easy
- Stationary high pressure cleaning system for floor or wall mounting



MAINTENANCE FRIENDLY

- easy access to all components



ROBUST

- Frame out of stainless steel



HIGH-PERFORMANCE

- Slow running CAT pump with 3 ceramic plungers
- Industrial motor 100 % S1



EFFICIENT

- Compact construction
- Miscellaneous industrial accessories
- Big dimensioned water feed line tank
- Time delayed pressure free total stop
- Possible to connect to several drop points
- Pump and motor separated by coupling housing

Optional functions:

- 1 detergent pump, dosing directly into the holding tank
- 1 detergent supply dosing pump via flow water control / remote control operation via remote control with turning switch operation via remote control with push buttons
- Time relays for total Stop (adjustable)
- Version with SPS mini computer for following safety functions
 - dry running protection
 - Pressure switch is permanent controlled for functional capability total stop of the SOYWR after 10 minutes
 - Automatic cut out by malfunctioning of the pressure switch, flow water control and by leaky pressure system



Model	WR 115	WR 123	WR 215	WR 223
Order-No.	SOY WR 115 - 000	SOY WR 123 - 000	SOY WR 215 - 000	SOY WR 223 - 000
Max. pressure [bar]	175	120	2 x175	2x120
Max. flow rate [l/h]	1000	1380	2x1000	2x1380
Power [kW]	6,6 kW S1 Industrial motor	6,6 kW S1 Industrial motor	6,6 kW S1 Industrial motor	6,6 kW S1 Industrial motor
Voltage [V/Hz]	3 ~ 400 V / 50 Hz	3 ~ 400 V/50 Hz	2x 3 ~ 400 V/50 Hz	2 x 3 ~ 400 V/50 Hz
Max. supplied water temp. [°C]	72	72	72	72
High pressure pump	plunger pump with 3 ceramic plungers	plunger pump with 3 ceramic plungers	plunger pump with 3 ceramic plungers	plunger pump with 3 ceramic plungers
Rotation [r/min]	1420	1420	1420	1420
Measurement (lxwxh) [mm]	740x400x740	740x400x740	740x450x1160	740x450x1160
Weight [kg]	70	70	126	126
Apply recommendation				

High Pressure Cleaner stationary unheated

Combi 250

For big applications
– industrial, robust and powerful



USER FRIENDLY

- Clear and easy
- Stationary high pressure cleaning device for floor or wall mounting optional available



MAINTENANCE FRIENDLY

- Easy access to all components



ROBUST

- Frame out of stainless steel
- Cover out of stainless steel



HIGH-PERFORMANCE

- Slow running CAT pump with 3 ceramic plungers
- Industrial motor 100 % S1



EFFICIENT

- Compact construction
- Miscellaneous industrial accessories
- Big dimensioned water feed line tank
- Time delayed pressure free total stop
- Possible to connect to several drop points
- Pump and motor separated by coupling housing

Optional functions:

- 1/2 detergent pump dosing with 4,6 L/h EPDM or Viton
- Total stop via time relays with adjustable turn-off time
- Winter freezing protection with lost water or circulated water
- Switch over cold/hot water
- Booster pump for higher water temperatures
- Stainless steel version V4A for aggressive water
- Version with SPS mini computer for following protective functions
 - Dry running protection
 - Pressure switch is permanent controlled for functional capability
 - Total stop of the SOYCC after 10 minutes
 - Automatic cut out by malfunctioning of the pressure switch, flow water control and by leaky pressure system
 - Pressure switch, flow water control or leaking system



Model	Combi 250	Combi 250
Order-No.	SOY CC 115	SOY CC 123
Max. pressure [bar]	175	120
Max. flow rate [l/h]	1000	1380
Power [kW]	6,6 kW S1 Industrial motor	6,6 kW S1 Industrial motor
Voltage [V/Hz]	3 ~ 400 V/50 Hz	3 ~ 400 V/50 Hz
Max. supplied water temperature [°C]	72	72
High pressure pump	plunger pump with 3 ceramic plungers	plunger pump with 3 ceramic plungers
Rotation [r/min]	1420	1420
Measurement (lxwxh) [mm]	900x450x370	900x450x370
Weight [kg]	85	85
Apply recommendation		

High Pressure Cleaner stationary unheated

CM 3000

For large applications – industrial, robust and powerful



USER FRIENDLY

- Clear and easy
- Stationary high pressure cleaning system for floor installation



MAINTENANCE FRIENDLY

- Easy access to all components



ROBUST

- Frame out of metal
- Cover out of stainless steel



HIGH-PERFORMANCE

- Slow running 3 plungers CAT pump
- As from 2 to 6 pumps available
- Industrial motor 100% S1



EFFICIENT

- Compact construction
- Miscellaneous industrial accessories
- Big dimensioned water feed line container out of stainless steel
- Time delayed total stop system
- Water shortage security device
- Control via microprocessor (SPS control)
- Connection with several supply drop points
- Pump and motor separated by clutch housing
- Alteration start warrants equal operating hours



Optional functions:

- As from 2 to 6 pumps available
- Automatic start system (after technical clarification)
- Winter freeze protection (after technical clarification)
- Switch over cold/hot water
- Complete in stainless steel version V4A for aggressive water
- Spezial SPS computer programs tailored to the cleaning task
- Versions with other pump types volume or different pressure possible
- Special versions for other special applications are possible
- Single operation of each HP pump with 1 or 2 detergent dosing pumps with 4,6 L/h EPDM or Viton



Model	CM 3000	CM 3000
Order-No.	SOY CM 215 - V01	SOY CM 223 - V01
Max. pressure [bar]	2 x 175	2 x 130
Max. flow rate [l/h]	2 x 1000	2 x 1380
Power [kW]	2 x 6,6 kW S1 industrial motor	2 x 6,6 kW S1 industrial motor
Voltage [V/Hz]	3 ~ 400 V/50 Hz	3 ~ 400 V/50 Hz
Max. supplied water temperature [°C]	80	80
High pressure pump	plunger pump with 3 ceramic plungers	plunger pump with 3 ceramic plungers
Rotation [r/min]	1420	1420
Measurement (lxwxh) [mm]	1150x850x1800	1150x850x1800
Weight [kg]	320	320
Apply recommendation		

Heating Unit Processwater Boiler

For fuel, oil or gas operation



USER FRIENDLY

- Simple operation
- Clear operating and control instruments



MAINTENANCE FRIENDLY

- Easy access to all components
- Clear design in components



ROBUST

- Tank integrated in tank system, processwater tank out of stainless steel
- No need for protect anode
- Hygienic and maintenance free due to stainless water tank



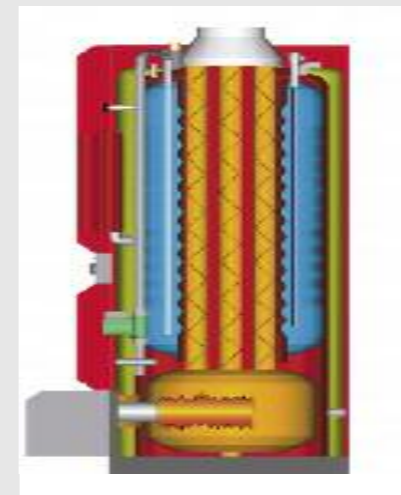
HIGH-PERFORMANCE

- Compact space-saving design
- Large surface area of the heat exchanger warrants excellent heat exchange of the tank in the tank system



EFFICIENT

- High constant degree of efficiency
- Limescale protection at the tank walls, thus at all times excellent, fast heat transfer
- Protection of bacteria due to hot water temperature over 60 °C



Model	Boiler 63 kW	Boiler 97 kW	Boiler 200 kW
Order-No.	358 0060 - HM	358 0100 - HM	358 0200 - HM
Power [kW]	63	97	200
Content [l]	151	330	641
Heating area [qm]	2,46	3,95	5,3
Operating pressure hot water boiler [bar]	10	10	10
Max. heating temperature [°C]	90	90	90
Water connection [zoll]	¾"	1"	2"
Chimney connection [mm]	Ø 150	Ø 150	Ø 250
Measurement (lxwxh) [mm]	542x1000x1698	680x797x2093	1020x1250x2085
Weight without filling [kg]	220	320 kg	550
Apply recommendation			

High Pressure Cleaner stationary electrical heated

CE 3000

For large applications – industrial, robust and powerful



USER FRIENDLY

- Clear and easy
- Stationary high pressure cleaning system for floor installation



MAINTENANCE FRIENDLY

- Easy access to all components



ROBUST

- Frame out of stainless steel
- Cover out of stainless steel
- Heating chamber out of stainless steel



HIGH-PERFORMANCE

- Slow running 3 plungers CAT pump
- Heating capacity from 18 to 144 Kw available
- Industrial motor 100 % S1



EFFICIENT

- Compact construction
- Miscellaneous industrial accessories
- Time delayed total stop system
- Possible to supply with several drop points
- Pump and motor separated by clutch housing



Model	CE 3000	CE 3000
Order-No.	SOY CE 11536	SOY CE 11554
Max. pressure [bar]	175	175
Max. flow rate [l/h]	1000	1000
Power [kW]	6,6 kW S1 Industrial motor	6,6 kW S1 Industrial motor
Heating capacity [kW]	36 kW electric heated	54 kW electric heated
Voltage [V/Hz]	3 ~ 400 V/50 Hz	3 ~ 400 V/50 Hz
Max. water temperature [°C]	72	80
High pressure pump	plunger pump with 3 ceramic plungers	plunger pump with 3 ceramic plungers
Rotation [r/min]	1420	1420
Measurement (lxwxh) [mm]	900x1250x1150	900x1250x1150
Weight [kg]	195	205
Apply recommendation		

High Pressure Cleaner stationary heated

CS 2000

For large applications – industrial, robust and powerful



USER FRIENDLY

- Clear and easy
- Stationary high pressure cleaning device for floor or wall mounting optional available



MAINTENANCE FRIENDLY

- Easy access to all components



ROBUST

- Frame out of steel, plastic coated
- Cover out of stainless steel



HIGH-PERFORMANCE

- Slow running 3 ceramic plungers pump
- Industrial motor 100 % S1



EFFICIENT

- Compact construction
- Miscellaneous industrial accessories
- Large dimensioned water feed line tank
- Time delayed pressureless total stop system
- Serially including water shortage protection, total stop and flame control
- Control via microprocess (SPS control)
- Possible to supply with several drop points



Model	CS 2000
Order-No.	SOY CS 120 WP-002
Max. operating pressure [bar]	200
Max. flow rate [l/h]	1000
Power [kW]	6,6 kW S1 Industrial motor
Voltage [V/Hz]	3 ~ 400 V/50 Hz
Max. water supply temp. ** [°C]	40-140
High pressure pump	plunger pump with 3 ceramic plungers
Rotation [r/min]	1420
Detergent supply	without, with one or two detergent
Measurement (lxwxh) [mm]	1170x510x550
Weight [kg]	190
Apply recommendation	

** by flow rate reduction



Special Cleaning Equipments

Cleaning systems for special cleaning tasks according to customer requirement

- WEIDNER plans, develops and manufactures High Pressure Cleaning Systems and special cleaning equipments for specific cleaning tasks.
- Surely we manufacture also cleaning systems according to customer request.
- Our experience in such special cleaning equipments has more than 30 years history.
- WEIDNER equipments are worldwide industrial deployed in daily applications at hard continuous operations.



USER FRIENDLY

- Simply clear functional equipment construction
- Directly controlled at the cleaning device via remote control or at the operation monitor, menu guide in cleartext, simple and understandable
- Fully automatic cleaning sequences depending at the cleaning task



MAINTENANCE FRIENDLY

- High quality high pressure pumps
- High quality materials for plungers and seals
- Slow running high pressure pumps
- Exact adjusted power to the cleaning task



ROBUST

- Industrial, robust and powerful
- Simply solid compact construction according to German quality
- Equipment are made completely in stainless steel A2 and A4, also for VE water
- Equipment designed for hard permanent operation as well as for multishift operation
- Control of the the bypass flow automatically function control of the pressure regulation system



HIGH-PERFORMANCE

- Various hp-pump system depending at the application case
- Working pressure adjustable via the high pressure nozzles
- Volume flow, working pressure via frequency converter infinitely adjustable
- Industrial motor 100 % S1



EFFICIENT

- Economically operation of the cleaning device
- Pressure and water volume are optimum adapted at the cleaning task
- SPS control with automatic program operating sequence warrants an optimum cleaning application
- Cleaning jobs can be visually indicated via monitor



Full-automatic cleaning system for IBC containers.



High pressure pump aggregate for high pressure cleaning.



Control and regulation elements of cleaning system.



Multiple pump equipment.



Descaling of strang casting.



4 pump equipment with different dosing system.

Under chassis cleaning equipment

Automatically cleaning of vehicles/rail vehicles.
Under chassis cleaning of vehicles and rail vehicles.



USER FRIENDLY

- Simple clearly construction
- Operation via remote control, or tele control or light barrier



MAINTENANCE FRIENDLY

- By using high pressure centrifugal type pumps
- Or slow running high pressure plunger pumps



ROBUST

- Industrial, robust and powerful
- Easy solid compact construction in industrial quality
- High pressure centrifugal pump out of stainless steel
- Slow running high pressure plunger pump



HIGH-PERFORMANCE

- Various pump systems depending on requirement
- Volume to be adjusted via nozzles (centrifugal pump)
- Via high pressure nozzles (plunger pump) adjusted working pressure
- Industrial motor 100 % S1
- 3 or 4 jet nozzle spinner in stainless steel, with rotating high pressure and jet nozzles



EFFICIENT

- Economical operation of the cleaning equipment by optimal lay out of the underchassis cleaning equipment
- Pressure and water volume are perfectly adapted to the cleaning task

Special Cleaning Equipments



Interior cleaning of rail coaches transport waggons.



Chassis cleaning of construction vehicles.



Under chassis cleaning of construction vehicles.



Chassis cleaning and tank of a diesel locomotive.



Result after cleaning.

Special Cleaning Equipment

Tank cleaning by close loop system. Electric or steam heated

For tank cleaning in a close loop system.
For difficult to clean products such as Latex, Acronal, Primal, Plextol, Butrafon, Diofan, Poligen, Styrofan, Vinnpas, Epoxide resin, Rubber.



- USER FRIENDLY**
- Clearly control panel
 - Fully automatic cleaning procedure
 - Hour meter for the actual cleaning time reset table to „0“
 - Hour meter for the total operating hours.



- MAINTENANCE FRIENDLY**
- Easy access to all components
 - Low maintenance, minimum service required
 - All filter meshes and filter baskets can be manually taken out



- ROBUST**
- Frame made out of square pipe stainless steel 1.4571 A4
 - Tank made of 1.4571 stainless A4 material
 - Filter mesh, filter basket made of stainless steel 1.4571 A4
 - Centrifugal type pump made of stainless steel 1.4571 A4



- HIGH-PERFORMANCE**
- Operation up to 2 container cleaning head, simultaneously, possible
 - With one tank interior cleaning head for 20'/30' container
 - With additional equipment, cleaning of rail wagon container possible



- EFFICIENT**
- Compact construction
 - Easy and solid assembly
 - Robust in handling and operation
 - Multi use of the detergent
 - Low discharge costs due to multi use of the detergent
 - For example materials like some Latex types do not become dissolved, but become loosening in pieces from the tank internal area and get separately disposed



Tank cleaning head at a 20' container during cleaning.



Loose latex parts after cleaning.



Operating panel close loop cleaning system LCS.

Special Cleaning Equipment

Container interior cleaning equipments

- Container interior cleaning of industrial products,
- Container interior cleaning of all kinds of foodstuff.
- For the container interior cleaning of drums IBC-container
- Small containers and tanks until approx. 30.000 liter container capacity.

As well as for the industrial tank and container cleaning of:

- Storage container
- Process container
- Stirring- and mixing container
- Fermentation and ripe container
- IBC-container



- USER FRIENDLY**
- Easy clear handling
 - Existing of few simple standard components



- MAINTENANCE FRIENDLY**
- Easy access to all components
 - Low maintenance high pressure pumps



- ROBUST**
- Solides appropriate adjusted cleaning concept
 - Manufactured in standardised module design, robust and powerful
 - Pumps also in complete stainless steel available
 - Designed for the hard continuous operation also for multiple shift operation.



- HIGH-PERFORMANCE**
- Optimum cleaning power due to the exact adapted working pressure/water volume at the cleaning task
 - Working pressure of the container cleaning head is adjustable
 - Rotation speed of the high pressure nozzles is adjustable
 - Container cleaning head is completely made of stainless steel
 - Container cleaning head also explosion proof



- EFFICIENT**
- The outcome is due to the optimisation of pressure, water volume and rotation speed at the cleaning task is automatically:
- Economical water consumption
 - Economical consumption of heating energy
 - Save sewage water
 - Save electrical energy consumption
 - Save time and money
 - Fast cleaning cycle with each container cleaning
 - Raising off the equipment efficient degree
 - Environmentally energy balance



Dirty tanks with hardened products before cleaning.



Cleaned tanks after full automatic cleaning procedure.



Interior cleaning food grade tank.



Interior cleaning IBC.

Tank interior cleaning equipments

Tank interior cleaning of industrial products.

Tank interior cleaning of all kind of food stuffs.

For tank cleaning of road tanks with 20' or 30' dimension.

As well as industrial cleaning of:

storage tanks, process tanks, mixing tanks, IBC-tanks

Or for cleaning of railway container tanks, for special tank interior cleaning up to 1000 bar.



USER FRIENDLY

- Clear operation over the monitor
- Or at the explosion proof remote control
- Clear overview of the cleaning procedure on the monitor
- Automatic control of all important parameters
- Fully automatic cleaning procedures through cleaning programs which can be done anytime by the customer himself



MAINTENANCE FRIENDLY

- Easy access to all components
- Low-maintenance high pressure pumps
- Tele-maintenance of the control mode via modem



ROBUST

- Solid appropriate equipment concept/ and equipment construction
- Industrial modular construction, made in Germany, robust and powerful
- Pumps on request, completely in stainless steel available
- Conceived for hard continuous working also in multi-shift operation
- The whole system can be build into container, with factory trial run



HIGH-PERFORMANCE

- Optimal cleaning results, due to the exact adopted working pressure/water quantity to the cleaning task
- Water volume of the individual cleaning head is adjustable
- Tank cleaning head is complete out of stainless steel, without electrical external drive. Tank cleaning head, also in explosion proof available
- Working pressure as from 50-max. 500 bar in Ex-proof sector possible.
- Until 1000 bar for special tank cleaning in which incrustated material can be properly cut



EFFICIENT

- Due to the optimizing of pressure and water quantity of the cleaning task:
- Saving of water consumption
 - Saving of heating energy
 - Saves waste water
 - Saves time and money
 - Fast operating sequences by each tank interior cleaning
 - Increasing of the equipment efficiency factor
 - Environmentally friendly, energy balance

Tank interior cleaning system built into a 40' container. To clean up to 2 containers at the same time.



Tank cleaning station in Asia region for tank trucks and containers.



Tank cleaning head TIK 2000 complete out of stainless steel with constant rotation. By cold or hot water operation. For the cleaning of road tankers, tank containers or other tanks with foodstuff or industrial products. The cleaning head is explosion proof.-



Dirt water of rail coach during cleaning.



Tank cleaning station for interior cleaning of tank containers.



Rail coach during interior cleaning.




Machine room tank interior cleaning of rail coaches 800 bar.



Tank cleaning station for interior cleaning in a cargo center.

Accessories · High Pressure Cleaner heated and unheated

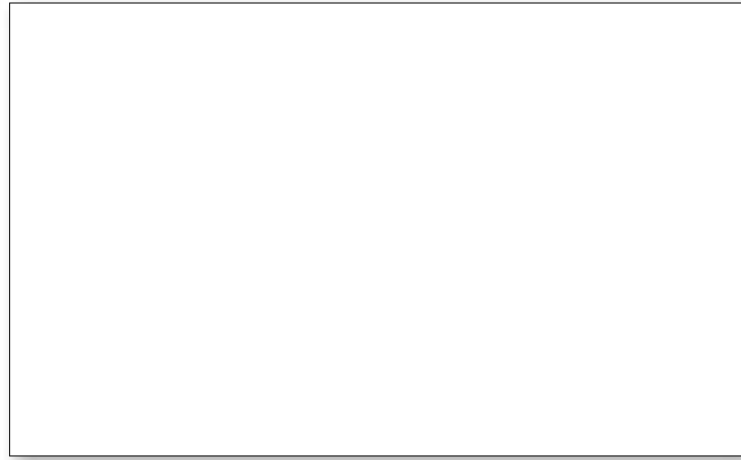
Description	Order-No.	Description
 25°	HDD 15 60 00	2503 R 1/4 AG
	HDD 15 61 00	25035 R 1/4 AG
	HDD 15 62 00	2504 R 1/4 AG
	HDD 15 63 00	25045 R 1/4 AG
	HDD 15 64 00	2505 1/4 AG
	HDD 15 65 00	25055 1/4 AG
	HDD 15 66 00	2506 R 1/4 AG
	HDD 15 68 00	2507 R 1/4 AG
	HDD 15 69 00	2508 R 1/4 AG
	HDD 15 72 00	2509 R 1/4 AG
	HDD 15 73 00	2512 1/4 AG
 0°	HDD 15 88 00	0004 1/4 AG
	HDD 15 89 00	00045 1/4 AG
	HDD 15 90 00	0005 1/4 USS
	HDD 15 91 00	00055 1/4 AG
	HDD 15 92 00	0006 1/4 USS
	HDD 15 95 00	0009 1/4 AG
	HDD 15 96 00	0010 R 1/4 AG
	HDD 15 98 00	00065 1/4 AG
Hp-nozzle	HDL 16 40 50	400 mm, 03 white
	HDL 16 40 00	400 mm, 035 brown
	HDL 16 41 00	400 mm, 04 yellow
	HDL 16 42 00	400 mm, 045 blue
	HDL 16 44 00	400 mm, 055 red
Swing over nozzle	HDL 16 15 00	600 mm (without nozzle)
Dirt blaster	HDL 16 27 35	600 mm, 200 bar, 035 cold water
	HDL 16 20 00	600 mm, 200 bar, 035 hot water
	HDL 16 25 00	600 mm, 170 bar, 05 hot water
	HDL 16 26 00	600 mm, 200 bar, 055 hot water
	HDL 16 27 00	600 mm, 200 bar, 045 hot water
Pressure adjusting nozzle	HDL 16 31 00	600 mm (without nozzle)
Foam injector with container	HDL 15 56 00	1 l
	HDL 15 55 00	
Lance holder	SOZ410000	
Hose holder	SOZ410100	

Description	Order-No.	Description
Bended WC-lance	HDL 17 60 00	400 mm, bended
Lance for chassis cleaning	HDL 17 70 00	900 mm
Brush	HDE 16 53 00	yellow without lance
Rotating brush	HDC 16 66 00	rotating by water jet max. 140 bar, max. 40°C
Telescopic brush	HDL 16 50 00	telescopic
Rotating brush industry	HDL 16 60 00	rotating by water jet
Sandblast attachment industry	HDL 14 30 00	
Lance/stainless steel	3727800330	330 mm
	3727800430	430 mm
	3727800500	500 mm
	3727800600	600 mm
	3727800800	800 mm
	37278001000	1000 mm
	37278001200	1200 mm
	37278001500	1500 mm
	37278002000	2000 mm
Lance with hand protection/stainless steel	3727800333	330 mm
	3727800433	430 mm
	3727800533	500 mm
	3727800633	600 mm
	3727800833	800 mm
	37278001033	1000 mm
	37278001233	1200 mm
	37278001533	1500 mm
	37278002033	2000 mm
Hose roll up automatic stainless steel for 20 m hp – hose	SOZ 131110	
Hose roll up automatic stainless steel for 40 m hp – hose	SOZ 131500	

Accessories · High Pressure Cleaner heated and unheated

Description	Order-No.	Description
Floor cleaner/stainless steel	HDL 16 71 50	∅ 300 mm
BaFloor cleaner/PVC	HDC 16 71 20	∅ 300 mm
Extension pipe	HDL 17 56 00	800 mm
Pipe cleaning hose	HDK 19 00 00	10 m
	HDK 19 01 00	15 m
	HDK 19 02 00	20 m
	HDK 19 03 00	25 m
	HDK 19 04 00	30 m
	HDK 19 06 00	40 m
	HDK 19 08 00	50 m
Pipe cleaning nozzle	HDK 19 12 00	rotating
Trigger gun	HDP 17 03 00	3/8" AG long
	HDP 17 04 00	1/4" AG long
Trigger gun 3000	HDP 17 07 00	short
Trigger gun 3000	HDP 17 08 00	long
Trigger gun 3000	HDP 17 09 00	short variopress
Trigger gun 3000	HDP 17 10 00	long variopress
Trigger gun also in stainless steel, power support available		

Description	Order-No.	Description
H-P hose	HDS 18 05 00	8 m, NW 6
H-P hose	HDS 18 06 00	10 m NW 6, 3/8"
	HDS 18 32 00	10 m NW 8, 2 ST, 400 bar
	HDS 18 42 00	15 m NW 8, 2 ST, 400 bar
	HDS 18 52 00	20 m NW 8, 2 ST, 400 bar
	HDS 18 61 00	25 m NW 8, 2 ST, 400 bar
	HDS18 62 00	30 m NW 8
	HDS 18 62 50	40 m NW 8, 2 ST, 400 bar
H-P hose abrasive resistant	HDS 18 85 00	10 m NW 10
	HDS 18 86 00	15 m NW 10
	HDS 18 87 00	20 m NW 10
	HDS 18 88 00	25 m NW 10
	HDS 18 89 00	30 m NW 10
	HDS 18 91 00	40 m NW 10
Up-hose coupling	HDS 18 90 00	2 x M 22
Water drawing hose	HDA 20 20 00	3 m complete incl. filter
Stabilisator S	WAS 15 00 10	1 kg
Hose reel	HDA 13 20 00	stainless for 20 m up-hose (without hp-hose)
	HDA 13 25 00	stainless for 40 m up-hose (without hp-hose)
Hose reel PVC	HDA 03 91 14	complete with connection hose reel only for the series BLUE JET 57/67/77/97 for max. 10 m hp-hose
Connection hose reel	HDA 13 66 00	W'Bar S 2000
	HDA 13 68 00	für HKY 242 BXR
	HDA 13 69 00	W'Boy, W'Bar S 500



Verkauf Ersatzteile Service

Peter

Heiz- und Reinigungssysteme

Karl-Joachim Peter
An der Wildbahn 14
42477 Radevormwald

Tel. 0 21 95 - 87 35
petercleaning@googlemail.com

Hochdruckreiniger
Kehrsaugmaschinen
Absaugtechnik
Bodenreinigungstechnik
Warmluftheizung
Austrocknungstechnik



WEIDNER REINIGUNGSSYSTEME GMBH

Schmollerstraße 33 · D-74523 Schwäbisch Hall

Telefon: (+49) 0791/9 50 12-0

Fax: (+49) 0791/5 47 42

E-Mail: info@weidner-cleaning.com

www.weidner-cleaning.com

